



ON ELECTION 2025 NEWSLETTER #3

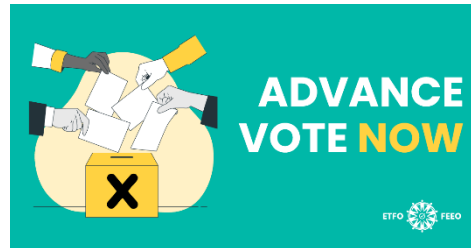
With one week to go, please remember that the fate of Ontario is in your vote!

Advance polls open Thursday, and **Election Day is next Thursday, Feb. 27.**

This week's newsletter is your guide to getting election-ready! It covers party platforms, ETFO endorsements, and all the details on when and where to vote.

Advance Voting is Open

Don't wait in line or make candidates spend extra time canvassing to get out your vote. Get to the poll and vote in advance!



Along with the ability to vote every day until election day at the returning office in your riding, advance polls are open for three days. Voting is from 10 a.m. to 8 p.m. on Thursday, Feb. 20, and continues Friday, Feb. 21, and Saturday, Feb. 22.

Poll locations can change with each election; you can find your advance voting location at elections.on.ca.

Use Your Voice

Informed and engaged residents help to keep politicians accountable and make our democracy thrive!

Visit the new ETFO Provincial Election Resources section at etfo.ca for excellent materials to help you encourage and mobilize voters to get to the poll. Below are a few resources you absolutely need to see.

Conversation Tools



Message Guides



Together, our conversations and actions can increase voter turnout in Ontario!

One way to do this is to share a regular message on social media. Post the new “I am ETFO and I vote” image on your favourite social media platform, and add why voting matters to you. In each post, include the hashtag #ETFOvotes.

[Download and post the “I am ETFO and I vote” shareable.](#)

[Share the “We vote” with a photo of you and your colleagues.](#)



Party Promises and Priorities

Stay informed with ETFO’s latest analysis of Ontario’s political party platforms.

However, it is a bit of a challenge to know what all the parties are pledging because the Conservatives have not released any details on their plans, priorities, or what their candidates will do.



Check out ETFO's platform overview on the Member Secure site. Login to members.etfo.ca and locate the document within the Political Action section. If you are logged in already, [click here for the party platforms](#).

Please email webadmin@etfo.org if you experience difficulty logging in or creating your ETFO account for the Secure site.

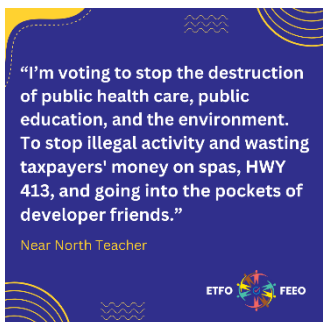
ETFO Endorsements

To support members in casting an informed and strategic vote the provincial Executive has compiled a list of candidate endorsements for ridings based on local recommendations.

You'll need to log in to the Secure site to see the list. Click [here there to view](#) the candidates endorsed by your union.

Stories from Members

Here are a few more stories from members who are eager to vote in this Ontario election. What's your reason for voting? Be sure to share it with others.



Vote for better schools, NOT more conservative cuts!